



GIS

FOR
OIL & GAS + MINING

INAUGURAL SEMINAR
PERTH - 21 FEBRUARY 2012

Founding Sponsors:



GE Smallworld



we-do-IT

Presented by:



GEOSPATIAL INFORMATION &
TECHNOLOGY ASSOCIATION®



An Operator's Perspective on the Importance of Geospatial Education for the OGM Industry

David Nemeth, a North American pipeline executive, describes the personal and professional benefits to himself and his company realized over the years through an unbiased forum for geospatial oil and gas industry education.

Special focus will be provided on current high-level critical issues that companies like Panhandle Energy are concerned about, including new technology developments, regulatory requirements and reporting, geospatial data accuracy, and asset and integrity management, among others.

The speaker, also a past president of GITA North America, will explain how operators can benefit from education by keeping current, establishing useful professional networks to help solve problems, and why cross industry interaction is so important.

We invite you to join David Nemeth and other leaders in the geospatial and resources industries at this GITA seminar for a thought-provoking day focused on practical issues that affect you and your team.

GITA Seminar Organising Committee:



Andy Neemann
Director
GITA Australia & NZ



Bob Samborski
Executive Director
GITA North America



Greg Oaten
Past President
GITA Australia & NZ



Ian Baldwin
Project Coordinator
Western Power



we-do-IT

Spatial Information
Technology Consultants

Melbourne
Sydney
Brisbane
Perth
Auckland
Denver

Smart Solutions For Your Business.
Trusted Geospatial Consultants

Managing Your Enterprise Assets.

As a leading provider of geospatial and smart GIS IT solutions, we-do-IT is committed to delivering accurate and reliable location-aware spatial solutions for oil, gas, and mining companies. Our 66 multi-skilled consultants operate under rigorous but disciplined internal processes, which ensures each project achieves client expectations in line with budget and milestone requirements. We operate in multiple time zones and have mastered over 64 different software languages in order to build and support solutions for your business.

info@we-do-it.com
www.we-do-it.com
Tel: +61 3 9881 0400

0800-0830

Registration and Tea/Coffee

0830-0845



Welcome

Phil Beach, GIS Manager, Water Corporation, and Director GITA ANZ.

Phil is the Manager Spatial Information Management for Water Corporation. As our organization delivers water services to our customers across the state of Western Australia we are striving to achieve our Vision - Water Forever. Zero Footprint. Great Place. Phil has extensive experience in the management of GIS and spatial systems and in the development of enterprise spatial data infrastructure.

0845-0915



Opening Address: CMEWA

Reg Howard-Smith, Chief Executive, The Chamber of Minerals & Energy of Western Australia

The Chamber of Minerals and Energy of Western Australia (CME) is the peak resources sector representative body in Western Australia. The role of CME is to champion the Western Australian resources sector and assist it in achieving its vision to lead the world in sustainable practice through innovation and to underpin Australia's position in the global economy. CME recognizes the opportunity to leverage the expertise of the Geospatial Information and Technology Association (GITA) to complement its work in the WA resources sector in some of its key portfolios such as Environment (and Emergency Management), Infrastructure (Power, Water, Communications, Transport), People (Skills, training and accreditation for GIS professionals), and Regulatory Issues (Learning from other jurisdictions).

0915-1000



Keynote Presentation: An Operator's Perspective on the Importance of Geospatial Education for the OGM Industry

David Nemeth, Director, Panhandle Energy, Houston, Texas, USA

A North American pipeline executive describes the personal and professional benefits to himself and his company realized over the years through an unbiased forum for geospatial oil and gas industry education. Special focus will be provided on current high-level critical issues that companies like Panhandle are concerned about, including new technology developments, regulatory requirements and reporting, geospatial data accuracy, and asset and integrity management, among others. The speaker, also a past president of GITA North America, will explain how operators can benefit from education by keeping current, establishing useful professional networks to help solve problems, and why cross industry interaction is so important.

1000-1040



GIS: Putting intelligence into the Smart Grid

Paul Keating, Western Power, WA

Smart Grids are the next big thing in Electrical Distribution Networks. To a large degree they are made feasible by the data which has been accumulating in Geographical Information Systems over a number of years. This presentation describes what a Smart Grid is, why it saves utilities and the community money and how the integration of GIS into asset management has laid the foundation which has made it all possible.

1040-1100

Morning Tea



GE Smallworld

Workforce Engineering & Design as an integrated Smart Grid software solution

1 Plan & Design



- Infrastructure Management
- Design Optimization
- Network Analysis

2 Construct & Service



- Mobile/Field Applications
- Work Order Management
- Schedule Optimization

3 Restore & Maintain



- Maintenance & Inspection
- Mobile Mapping
- Outage Restoration

1100-1125



Sponsor Presentation – GE Digital Energy

Robert Zasadzki, Software Sales Manager - Australia & New Zealand

Smallworld Geospatial Solutions are advanced solutions for network infrastructures.

Efficiently design and model complex network infrastructures while also supporting asset management lifecycle processes. Smallworld™ produces solutions for companies with complex network asset management problems – electrical, telecommunications, gas, water and public authorities.

Mobile Solutions extend the reach of network asset management.

Increase the value and reach of network asset management with a suite of integrated field based mobile mapping and workforce management solutions. GE Energy's MapFrame™ Mobile Solutions are a map-centric approach that integrates operational data and automates field-based processes.

1125-1150



Sponsor Presentation – Infotech Enterprises Limited

Sanjay Krishna, Vice President and Head Asia Pacific

Bradley Willmore, National Sales Manager – Mining & Energy

Infotech Enterprises provides leading-edge engineering solutions, including product development and lifecycle support, process, network, and content engineering to major organisations worldwide. With nearly two decades of continuous growth, Infotech leverages a "Global Delivery and Collaborative Engineering" model to achieve measurable and substantial benefits for our clients.

With Global Headquarters in Hyderabad, India, Infotech has 9,200+ employees across 30 global locations. Our clients span multiple industries such as Aerospace, Consumer, Energy, Medical, Heavy Equipment, Rail, Semiconductor, Telecom, and Utilities and include leading global energy and resources companies. With Infotech, organizations have the opportunity to fully leverage technology and data, helping to deliver tangible business results and increased competitive advantage in today's rapidly changing markets.



We partner with Fortune 500 firms including EPICs, rig operators, shipyards and equipment manufacturers to design and build robust engineering solutions across the Oil & Gas value chain. Our multifunctional teams, comprising domain and functional experts, provide product and process engineering solutions from up-stream to downstream (including drilling, extraction, storage and refinement). Our innovative designs for critical sections of offshore structures, such as moon pool, jacking system, derrick, helideck spuds, spud can and drilling systems, help our customers achieve significant cost savings by reducing the yard docking time. Our solutions comply with safety standards such as SOLAS and other regulatory standards including MARPOL, NORSOK, COLREG, ABS, DNV, Lloyds, etc.



Engineering Content to Optimize and Manage Spatial Data

Efficient and effective data management to improve decision making

- 200 m²** - focus - engineering critical data
- 8,000 m²** - database features classified and migrated
- 8,000 m²** - curve feet work processed
- 8,000 m²** - 95 % of satellite data processed
- 1,000** - geospatial documents catalogued and indexed

- 100** - Technical Services
- 100** - Content Management Services
- 100** - Spatial Engineering Services
- 100** - Software Development Services

- | | | |
|-----------|-------------|----------|
| Australia | Malaysia | Tanzania |
| Canada | Netherlands | USA |
| France | New Zealand | UK |
| Germany | Hong Kong | USA |
| India | Singapore | |



www.infotech-enterprises.com

Sponsor Presentation – nearmap.com

Adrian Young, Director of Sales

1150-1215



nearmap.com publishes the world's best PhotoMaps online to enable governments and businesses to excel. Our very high resolution PhotoMaps are updated typically monthly in Australia's capital cities and quarterly in regional areas, giving our customers the unique ability to see the detail of what is on the ground now and how it is changing.

Built around Australian innovation, nearmap.com has developed a complete technology solution that enables us to quickly capture and process PhotoMaps and digital elevation data and to serve that data online with unprecedented currency, clarity and accessibility. Our PhotoMaps allow users to move back and forward over time, a capability that is not available in any other solution, anywhere in the world. As a result, for the first time people are able to see the built and natural environment change over time in stunning detail, in specific locations or across entire cities.

This unique capability is creating new efficiencies and enabling informed decision making for our government clients and is being rapidly and widely adopted in a range of commercial verticals, from resources to insurance, engineering to agribusiness and utilities to media. With frequently updated coverage of more than 75% of Australia's population, nearmap.com is changing the game in geospatial.

Sponsor Presentation – we-do-IT Pty Limited

Chris Stoltz, CEO

1215-1240



we-do-IT is an Australian owned and operated leading provider of geospatial and smart grid IT solutions. We employ 66 highly trained and multi-skilled consultants across Australia, New Zealand, and North America, who are committed to delivering accurate and reliable location-aware spatial solutions for oil, gas, and mining companies. Since 1995, we have created an enviable reputation in the telecommunication, electricity, gas, and water utility industries.

we-do-IT assists our clients around the globe by supporting a total of 98,381km of copper and fibre distribution and gas pipeline networks. Our flexible but disciplined internal processes and reliable support teams ensure each project achieves client expectations in line with budget and milestone requirements. We work hard to provide oil, gas, and mining businesses with outcomes that achieve for them their financial, regulatory, and environmental objectives.

Our consultants seek first to understand our clients' businesses and then deliver cost effective outcomes with real and tangible business improvements. This approach has withstood the best of time and as a result we proudly boast an unrivalled customer loyalty and retention rate.

1240-1340

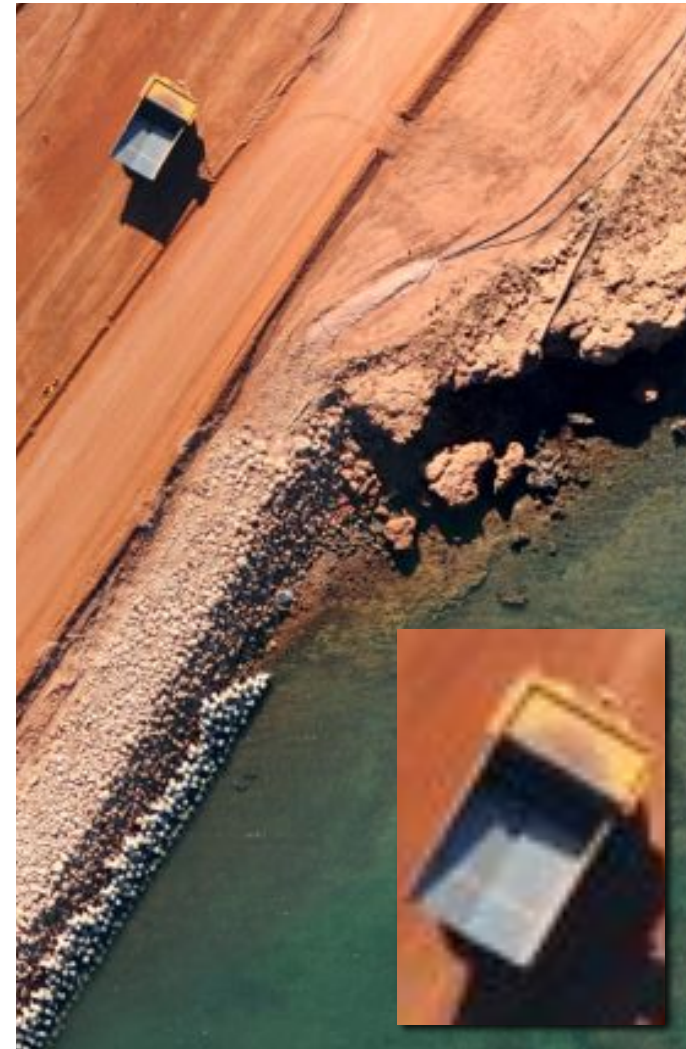
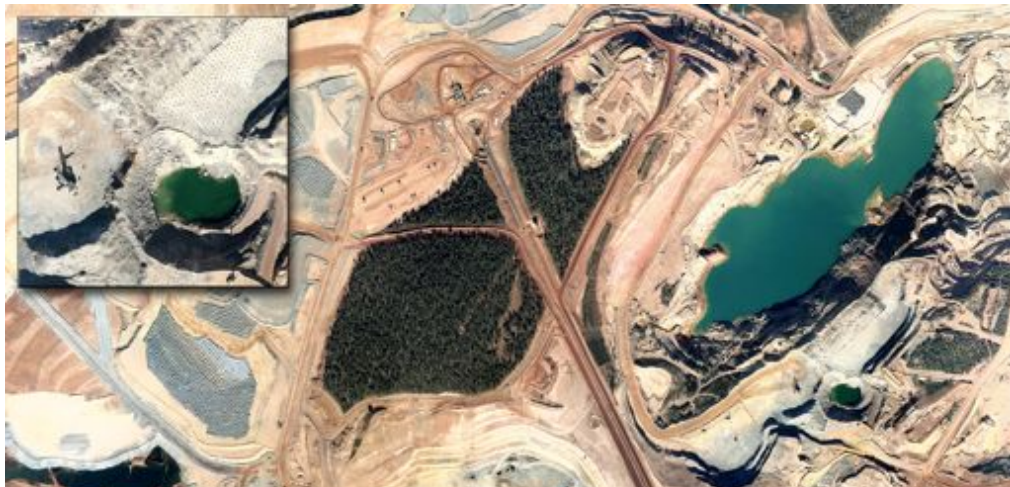
Lunch

Powering OGM with the world's clearest, fastest aerial PhotoMaps

Whether you're managing projects, assets, environment, safety or stakeholders, nearmap.com gives you the unique ability to see the detail of what is on the ground now and how it is changing, all from your desktop.

- **Clarity:** ultra high resolution from 10cm to 2cm
- **Currency:** delivered online within days of capture
- **Change:** innovations that enable repeat capture at a fraction of the cost of legacy technologies

Contact us today to change the way your business sees the world...
+61 8 6140 7200 | queries@nearmap.com | www.nearmap.com



nearmap
.com

1340-1420



Gas Transmission & Distribution Integrity Programs in North America

J. Peter Gomez, Principal Consultant, Integrity Management Programs, Xcel Energy, Colorado, USA

Transmission and Distribution Integrity Management programs have been mandated in North America in order to mitigate risk of emergencies within High Consequence Areas. This follows a series of major leaks and explosions in the past few years. Implementation of these programs requires a paradigm shift from reactive to preventative maintenance and management. This presentation also explores the:

- important role played by GIS technology in underpinning the integrity management process.
- thought-leadership and education contributions of GITA in this field.

1420-1500



Using GIS and Global Knowledge Management to Respond to Intensifying Risks in the Energy Industries

Jim Dray, Chief Technology Officer, AECOM Environment, USA

Many factors are coming together to increase risk in the energy industry, and to raise the visibility of those risks far beyond local boundaries. This presentation will illustrate some of the techniques used by a global firm, and its global energy clients, to:

- Capture and transfer knowledge about risk across a global enterprise
- Use GIS and mobile computing for more effective spill and disaster response, including appropriate transparency to stakeholder
- Modelling risks of shale gas exploration, and integrating those risks into a GIS environment

Questions and Answer Session

Phil Beach and Bob Samborski with all presenters and GITA Board of Directors.

1500-1530

What are the most pressing issues in the resources sector today that need a geospatial solution?

1530-1630

Please join us for drinks...networking...idea sharing...

Thank you to our sponsors:



GE Smallworld





GITA North America



14456 East Evans Avenue
Aurora, COLORADO 80014
USA

info@gita.org

www.gita.org

GITA Australia & New Zealand



Suite 145, National Innovation Centre
Australian Technology Park
4 Cornwallis Street
Eveleigh, NSW 2015
AUSTRALIA

info@gita.org.au

www.gita.org.au

GITA Japan



#101 Esperanza Hirakawacho, 2-3-3,
Hirakawacho
Chiyoda-ku TOKYO 102-0093
JAPAN

gitainfo@gita-japan.org

www.gita-japan.org

GITA Hungary



H-1111 Budapest
Műgyetem Str. 3.
(Budapest University of Technology and
Economics, Department of Geodesy
and Surveying)
HUNGARY

gita.hungary@axelero.hu

www.gita.hu